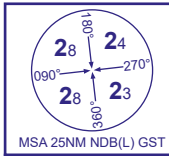


INSTRUMENT APPROACH CHART - ICAO

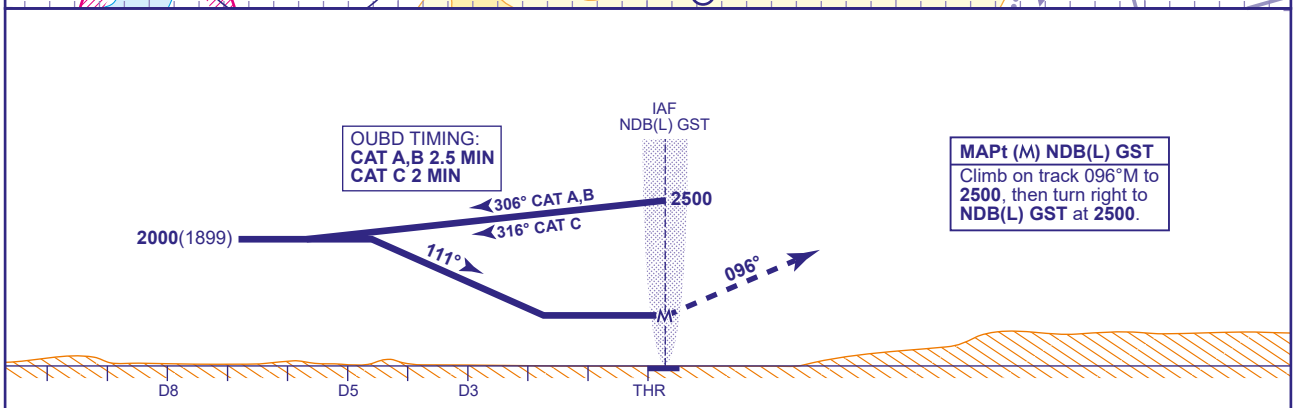
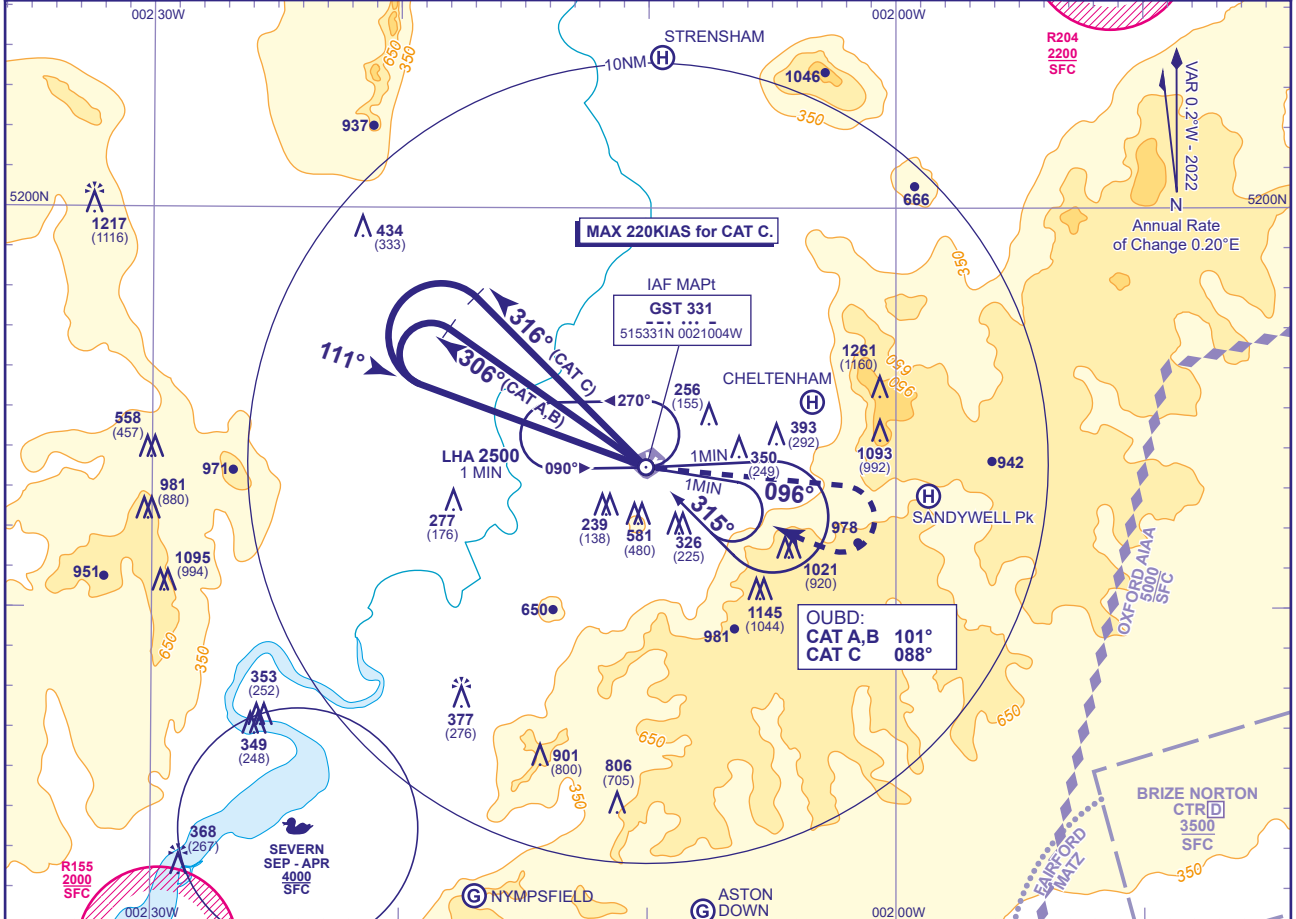
GLOUCESTERSHIRE NDB(L)

AERODROME (ACFT CAT A,B,C)



APP	128.555	GLOSTER APPROACH	AD ELEVATION	101
TWR	122.905	GLOSTER TOWER		
RAD	128.555, 120.980	GLOSTER RADAR	OBSTACLE ELEVATION	1261 AMSL (1160) (ABOVE THR)
ATIS	127.480	GLOSTER INFORMATION		
			BEARINGS ARE MAGNETIC	

TRANSITION ALTITUDE	3000
---------------------	------



Aircraft Category	A	B	C
VM(C)OCA (OCH AAL)			
Total Area	1000(899)	1000(899)	1500(1399)
North of RWYs 04/22 and 09/27	830(729)	830(729)	

NOTES 1 To commence procedure from hold, overhead NDB(L) GST fly baseturn manoeuvre on: CAT A,B 101°; CAT C 088° for 1MIN then turn right back to the facility on 315°M **not below 2500**.
 2 Aircraft will normally be required to hold not lower than **4000** or the equivalent FL.
 3 Aerodrome approach to VM(C) criteria.